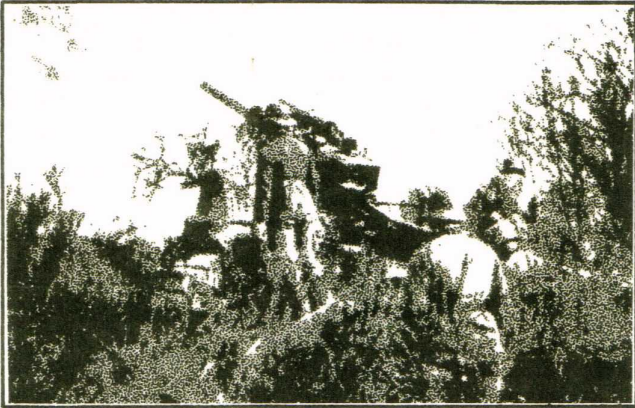


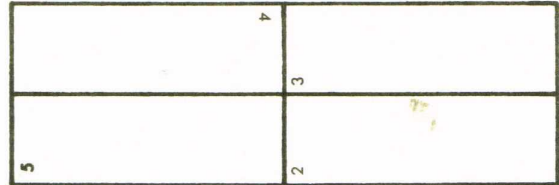
BEACHHEAD AT OZEREYKA BAY

Scenario 106



IN THE OZEREYKA VALLEY, February 4th, 1943: In an effort to cut off the seventh Army's retreat to the Iaman Peninsula, Stalin developed a plan to use the combined efforts of a land and seaborne operation. The Black Sea Fleet would land a force composed of army and naval troops in the German's rear. This force would smash the coastal defenses at a favorable point and establish a beachhead. Later, this beachhead would be enlarged by follow-up units in a drive toward Volchyi Vorota and eventually link up with the 47th Army. The landing point chosen was the area around Ozereyka Bay. After heavy naval bombardment, the first Russian assault waves landed on the beach in front of Rumanian coastal defense units and formed up for the push toward the town of Glebovka, their first inland objective.



Board Configuration



VICTORY CONDITIONS

The Russian player wins by eliminating (or capturing and keeping) both artillery pieces *and* exiting 5 squads off the west edge of board 3 between hexes 3Q1 and 3Y1 inclusive. If only one condition is met the game is a draw. If neither condition is met, the German wins.

TURN RECORD CHART

 German sets up first	1	2	3	4	5	6	7	8	9	10	11	END
 German moves first												



Elements of the 3rd Troop, Army Coastal Artillery Battalion 789 set up on any whole hex of board 3 and/or 2 north of row E inclusive:



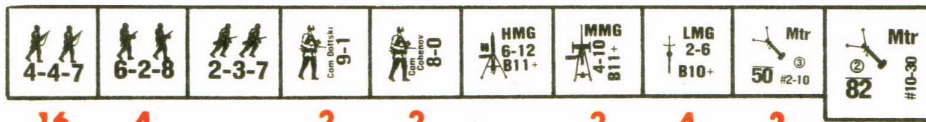
Set up on any Hill 621 hex on board 2:



Elements of 5th Co., 38th Rumanian Infantry Regiment set up on any whole hex north of rows W and K inclusive on boards 5 and 4 respectively:



Advance Landing Force elements set up south of rows V and L inclusive on boards 5 and 4 respectively.



SPECIAL RULES

- 106.1 All buildings are considered single story and of wooden construction.
- 106.2 All hexes of hill 547 are considered flat open ground.
- 106.3 All hexes of hill 534 are considered flat wooded ground.
- 106.4 The German radio may be used for on-board indirect fire only. There is no off-board artillery available.
- 106.5 No bore sighting is allowed by either side.
- 106.6 The two German artillery pieces must be placed within 3 hexes (inclusive) of one another.

AFTERMATH: With support from their mortar teams and a few light tanks that had made it ashore, the Russian assault parties broke through the forward Rumanian positions and captured the German artillery positions of the Third Troop, 789 Battalion. But the losses suffered in taking the position had been too great. The Russian troops that reached the town of Glebovka amounted to little more than a platoon. Together with the remaining Rumanian units, the Germans dislodged the Russians from Glebovka and pushed them all the way back to the beaches. The defeat, like the one suffered by the Western Allies five months earlier at Dieppe, had been disastrous.